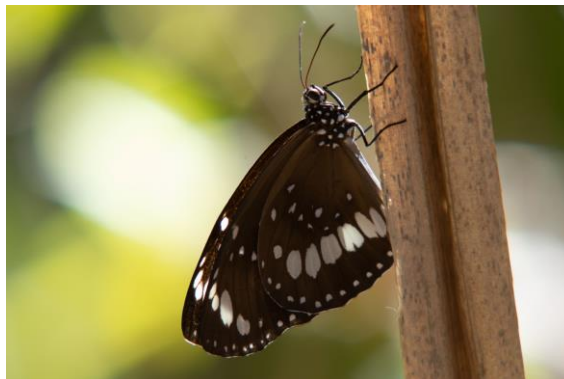
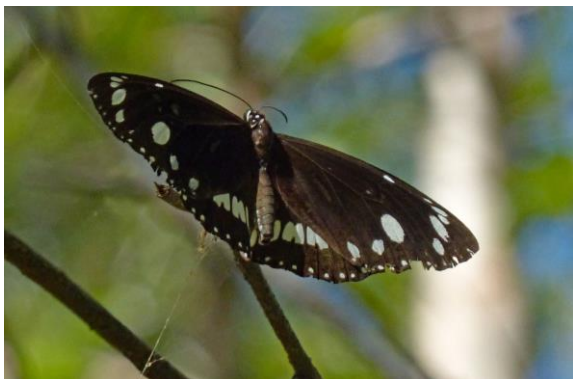


Common Crow (*Euploea corinna*)



Common Crow, *Euploea corinna*, Upper, left and lower, right.
Photo: Noel Young, left. Euan Moore, right.

Other Common Names: Australian Crow, Oleander Butterfly

Family of Butterflies: *Nymphalidae* (Browns and Nymphs)

Size: Wingspan – 69mm male, 72mm female.

Local observations: There are no local observations on Atlas of Living Australia or iNaturalist.

Tony Morton's documented records of Common Crow from the local area (between 2000 to 2013):

Date	Location	Notes
28-Feb-2011	Vaughan garden	very worn

Distribution outside our region: This species is a vagrant to Victoria only appearing after post wet-season migration in northern Australia. Most Victorian records are from Melbourne and from the Albury-Wodonga area. Outside Victoria this species is found across the top of Australia from the Kimberley to Brisbane and Sydney. Internationally it is found across India and South-east Asia,

Larval Host Plants: Numerous native and introduced plants have been documented from Australia, with Oleander (*Nerium oleander*) being the main host plant in Victoria.

Larval association with ants: None.

Adult Flight Times in Victoria: Only documented within Victoria from January to April.

Conservation Status:

[The Action plan for Australian Butterflies:](#) Vulnerable in Australia

[Environment Protection and Biodiversity Conservation Act 1999:](#) Not listed

[Flora and Fauna Guarantee Act 1988 – Threatened List:](#) Not Listed

Other Notes: Probably a rare to very rare visitor to the Mount Alexander Shire, with any breeding attempts unlikely to be successful.

The classification of this species is not fully resolved with some references referring to it as *Euploea corinna* while others refer to *E. core* and sometimes *E. core ssp corinna*.

References and further reading:

Atlas of Living Australia – [Euploea corinna](#), Common Crow.

iNaturalist – [Euploea core](#), Common Crow.

iNaturalist – [Euploea core ssp corinna](#), Common Australian Crow.