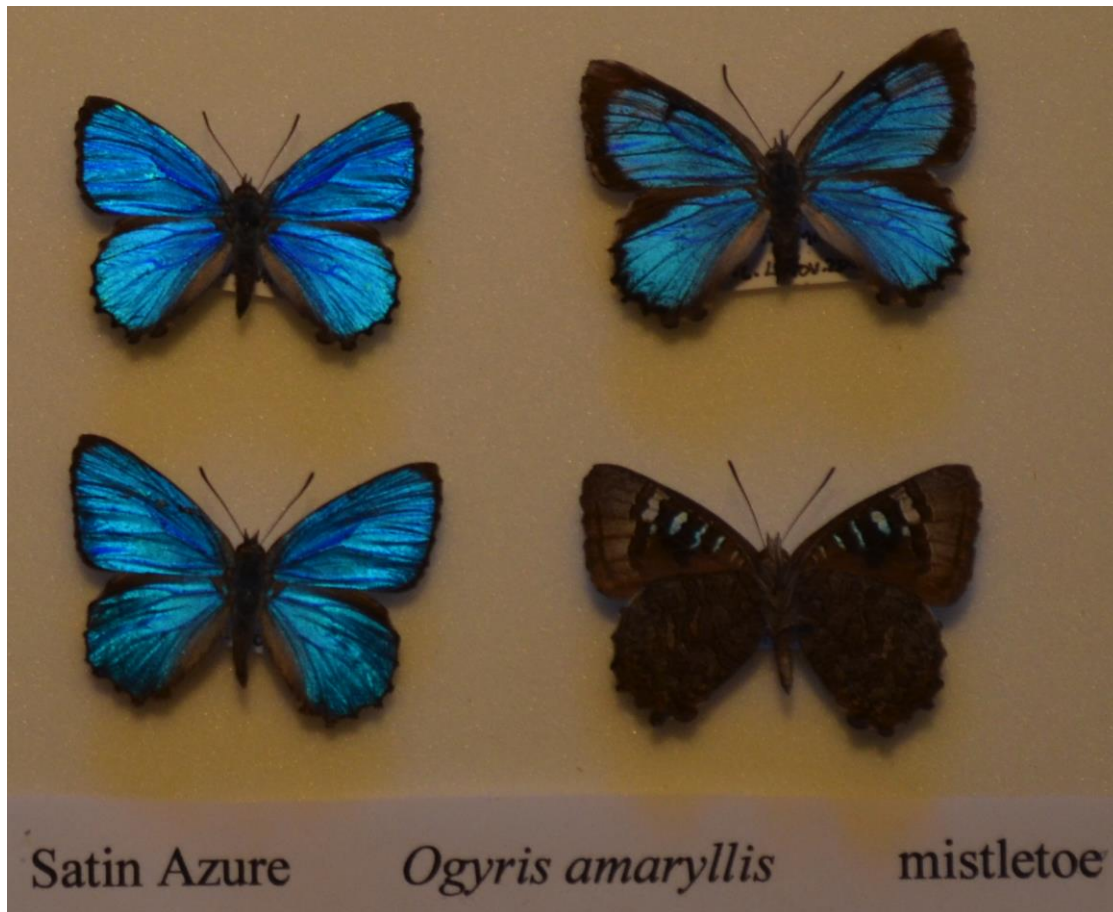


Satin Azure (*Ogyris amaryllis* subsp. *meridionalis*)



Museum specimens. Photo: Tony Morton

Note 1: The males occur on the top left, and bottom row and the female occurs on the top right. The upper side of the butterfly wings are shown on the top row and bottom left and the underside side of the male butterfly wings are shown on the bottom right.

Note 2: The plant name refers to the plants upon which the butterfly larvae (caterpillars) feed.

Other Common Names: Amaryllis Azure

Family of Butterflies: *Lycaenidae* (Blues and Coppers)

Size: Wingspan 34mm.

Local Observations: There are no local observations on either Atlas of Living Australia or iNaturalist. The closest records are from the Inglewood area.

Tony Morton's records of Satin Azure from the local area (between 2000 to 2013)

Date	Location	Notes
16-Feb-2013	Vaughan drive	female on A preissei on Cootamundra
1-Jan-2013	Kalimna Park	one female

11-Nov-2009	Kalimna Park	10 a.m. - 1 p.m. 34°C
7-Nov-2009	Vaughan walk	midday 30°C
11-Nov-2007	Vaughan walk	
1-Nov-2006	Kalimna Ridge	
3-Dec-2004	Vaughan	on bottlebrush outside study window
16-Nov-2004	Kalimna Park, Castlemaine, Vic.	
26-Nov-2003	Kalimna Park, Castlemaine, Vic.	
7-Nov-2003	Kalimna Park, Castlemaine, Vic.	
17-Nov-2002	Ridge, Kalimna Park	fresh, mainly male, common after c.1530
17-Nov-2002	Castlemaine	Common round red bottlebrush (Hakea?) on Kalimna Park ridge
3-Dec-2000	Bluff, Central Springs, Vaughn	
25-Nov-2000	Ridge, Kalimna Park	fresh, male
14-Nov-2000	Ridge, Kalimna Park	
8-Nov-2000	Ridge, Kalimna Park	
12-Oct-2000	Ridge, Kalimna Park	
29-Feb-2000	Vaughan walk	

Distribution outside our region: Most documented Victorian observations of this species are from the western half of the state. This species has been recorded from all mainland states.

Larval Host Plants: Mistletoes (*Amyema* spp.)

Larval association with ants: Larvae often associated with ants from the genera of *Anonychomyrma*, *Iridomyrmex* and *Crematogaster*.

Adult Flight Times in Victoria: In Victoria, there is probably a single annual life cycle, with most adults being documented in late spring (October to December). Individuals have been seen in flight from August to April, with the autumn adults possibly representing a small second annual brood.

Conservation Status:

[The Action plan for Australian Butterflies:](#) Vulnerable in Australia

[Environment Protection and Biodiversity Conservation Act 1999:](#) Not listed

[Flora and Fauna Guarantee Act 1988 – Threatened List:](#) Not Listed

Other Notes: Probably uncommon in Mount Alexander Shire, although may be locally common where mistletoe is abundant. Local area is near the south-eastern edge of its known range.

Known to be a hill-topping species.

References and further reading:

Atlas of Living Australia – [Ogyris amaryllis](#), Satin Azure

iNaturalist – [Ogyris amaryllis](#), Satin Azure